



Key Features

- Displays local inventory information for multiple connected tanks, 24/7 via the SMARTank Web Portal.
- Integrated GSM or CDMA cellular modem for 2-way wireless communication.
- Supports up to 10 SMARTank Clients and up to 4 wired connections.
- Remotely programmable Call Out times.
- Easy-to-read backlit display shows various units of measurement, product and tank ID, all at the site.

Local Inventory Information for Multiple Connected Tanks

The SMARTank™ Foresight provides a very affordable solution for multi-tank monitoring and near real-time inventory position reporting for up to 10 co-located SMARTank Client tanks within 150 feet, and up to four wired connections.

Discover how the SMARTank Foresight and the SMARTank Web Portal can help make your operation run more efficiently. Our single-source combination of electronic hardware and software puts tank information at the user's fingertips, whether on-site or 1000 miles away.

AC Powered Plus Battery Backup

A built-in integrated UPS power supply permits operation during power failures or an inadvertent loss of AC power for up to 30 days. A loss of AC power signal flag is sent to the website to allow for preventive intervention.

Know When To Go

The SMARTank Web Portal gives you all the current information and past usage history you'll need to make the best decision of when to roll a truck. The system monitors inventory positions, sending alerts to Customer Service/Account Managers at recommended reorder points or when safety stock levels are reached.

3G/4G or CDMA Cellular Technology

All SkyBitz monitoring devices operate on 3G/4G cellular networks, or you can choose CDMA cellular technology, whichever works best in your area. Using these networks gives you years of secure, reliable service and an affordable way to monitor multiple connected tanks.

Improved Forecasting

The SMARTank Web Portal gives you 24/7 access to critical tank level information on on any connected device, including our mobile app.

- TankLocator enables asset visibility five different ways, including via GPS.
- Delivery/routing data can be exported to Excel or your routing package.
- Email alerts: Critical low, critical high, short-fill detection, with criteria that you set.

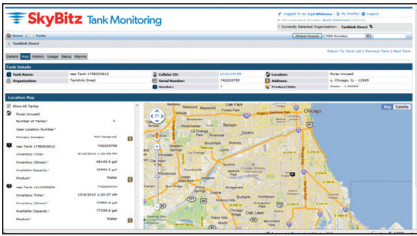
Dedicated Wiring Compartment for Field Wiring

Designed for flexibility and ease of use, the Foresight has a unique AA isolated two-compartment design, which provides a dedicated wiring compartment for field wiring.

Reduce Your Costs, Become More Efficient

Contact us for a detailed consultation, recommendation and quote on the SMARTank Foresight multiple tank monitoring solution can help cut distribution costs and increase operating efficiency and profit.

Visit www.SkyBitz.com/TankMonitoring, or call 1-888-826-5546.



SMARTank Web Portal

The SMARTank web portal provides 24/7 critical information to enable the most efficient replenishment and delivery decisions.

Key Benefits of the SMARTank Foresight

- Critical tank data available 24/7, via our SMARTank Tank Level and Analytics Portal - Mobile App available too
- Displays local inventory information for multiple connected tanks
- Supports up to 10 SMARTank Clients and up to 4 wired connections
- Low cost cellular technology
- Easy-to-read backlit display shows various units of measurement, product and tank ID, all at the site
- Secure, reliable access to tank information when and where you need it

Specifications

PHYSICAL

Sensors:	2 Isolated 4 to 20 mA inputs, effective input impedance of 300 Ohms; 2 Non-isolated 4 to 20 mA input, effective input impedance of 100 Ohms
Housing:	NEMA 4X; weatherproof; UL approved (UL94HB); glass-filled nylon
Area Classification:	General Purpose environment

CELLULAR COMMUNICATION

North America Cellular:	850 (824 – 894) MHz 1900 (1850 – 1990) MHz
North America ISM:	915 (901 – 928) MHz

PERFORMANCE

Unit Power Requirements:	120 (100 – 130) Vac @ .15 A, 60 Hz
Output Voltage:	Nominally 24V +/- 5%
Output Current:	Rated 0 – 50 mA
Load Regulation:	0.5% @ 50 mA load
Ripple:	50 mV Peak-to-Peak
Output Short Circuit Protection:	Output is current limited to 50 mA
Accuracy for Sensors:	± 1% Internal Measuring Circuits
Battery Type:	Two replaceable lithium-ion batteries (CR-123A).
Expected Battery Life:	Three callouts per day – up to 1 month of battery mode operation

ENVIRONMENTAL

Operating Temperature:	-22°F to 167°F (-30°C to 75°C)
Storage Temperature:	-40°F to 185°F (-40°C to -85°C)
Antenna Connector Type:	Standard SMA